

campaign update 2016

World-renowned clinical pharmacologist Dr. Richard Kim

Hospital Volunteers Support Canadian-First Personalized Medicine Program

In October, the London Health Sciences Centre (LHSC) Auxiliary announced its latest pledge of \$2.24 million to support Canada's first hospital-wide implementation of personalized medicine. This ground-breaking program is led by world-renowned clinical pharmacologist and LHSC Chair/Chief, Clinical Pharmacology, Dr. Richard Kim.

Personalized medicine uses recent advances in genomic diagnostic technologies to understand the genetic differences between individuals and how each patient will process medications. This process helps identify the best medication, at the right dose to be most effective for each, individual patient – while reducing the possibility of adverse drug reactions.

"Personalized Medicine increases patient safety and quality-of-care," says Dr. Kim. "The LHSC Auxiliary's donation will help transform the model of care at London Health Sciences Centre – and eventually worldwide – by incorporating personalized gene testing as a part of patient care."

The pledge will support laboratory positions, the purchase of key technology for genomic diagnostics, training initiatives and other resources needed to enable Canada's first hospital-wide deployment of this personalized medicine approach.

"This pledge supports LHSC's journey to fundamentally transform the way care is provided in our hospital and community – but the Auxiliary's contribution goes beyond the gifts, services and financial support they provide – these volunteers are truly great ambassadors for our hospital," says LHSC President and CEO Murray Glendining.

When you visit the gift and flower shops run by the LHSC Auxiliary, their connection to hospital innovation may not be readily apparent, but it is there. Proceeds from the flowers, snacks and carefully selected inventory of gift items have supported and continue to support some very progressive programs over the volunteer organization's 90-plus-year history. ■

The Joy of Family



Jessica and Isabelle Drummond

Although invisible from the outside, Jessica Drummond always carries with her a memento from LHSC – four titanium clips that were surgically affixed to repair her skull after a terrible accident.

Jessica, a newcomer to Listowel, Ontario, was walking to the local community garden when a truck hit her. Her skull was severely fractured.

"She was in an ambulance being rushed to London, and I was terrified," says her husband Jason. "We'd only been married for 10 months. I couldn't lose her."

Brain surgery was required to save Jessica's life. "I could sense the expertise of the doctors and nurses," says Jason, "and I felt relief. The health care team was hands-down amazing."

Jessica was in a coma for three weeks. Slowly but surely, she emerged from her coma and was able to leave Victoria

Hospital. Two years of rehabilitation followed. She had to adapt to new health challenges, such as the frightening and physically taxing seizures she was now having as a result of her brain injury.

Even so, Jessica knew she wanted to have a family. In 2012, the Drummonds returned to LHSC – this time under much happier circumstances.

"I was expecting," Jessica says, "and LHSC's Women's Care Program was the best place for me to be monitored and have my baby." The seizures meant the pregnancy was high-risk and the care offered by LHSC's specialists would ensure Jessica and her baby stayed healthy and safe. Jessica and Jason are now the proud parents of Isabelle, who arrived safely in August of 2013, and Emily, who joined her in July of 2016. "I'm so happy to be here and to have a family," says Jessica. ■



The Drummond Family Says Thanks

Jason and Jessica Drummond have supported London Health Sciences Foundation's (LHSF) Women's Care Campaign with gifts totaling \$25,000 to help refurbish the antenatal patient lounge at Victoria Hospital and to support the highest-priority needs of the Women's Care Program at LHSC. ■

The Long Journey Back



Gino Ianni

What began as a regular workday for millwright Gino Ianni suddenly became the worst day of his life. A portion of the 1,200-pound piece of equipment he was installing fell over, crushing his leg. Within minutes, he was in an ambulance on his way to LHSC.

Dr. Abdel-Rahman Lawendy performed an emergency procedure to save Gino's leg. The muscles had already started to die and the risk of losing his leg was imminent.

Gino emerged from surgery with a reconstructed lower leg – but he quickly realized that life as he knew it was over.

"I was always the fixer, the go-to guy, but I wasn't that guy any longer," he says. "It felt like my life was taken away from me."

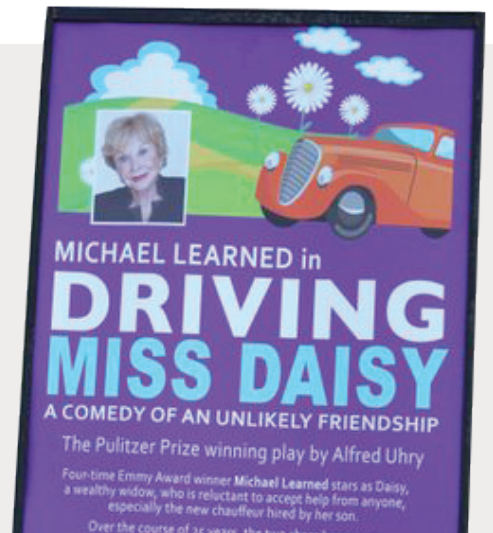
Little by little, over the course of almost two years of physiotherapy and healing, Gino's health and mobility improved. His injury had affected every part of his life – the physical, mental and spiritual. He began the journey to remake his life.

He and his wife Kelly started to travel again. They also decided to move and custom-designed and renovated their new home to begin their new way of life.

Now, Gino – who, along with his family, has become a generous supporter of the Hospital – sees the worst day of his life as a wonderful gift of strength and resilience. "I know that as long as Kelly and I are together, there's nothing we can't tackle." ■

Driving Miss Daisy Supports Mother Baby Care

This year marks the Victoria Playhouse Petrolia's inaugural presentation in support of the Women's Care Program at LHSC. A special performance of *Driving Miss Daisy* raised just over \$30,000 to help upgrade two private suites in the Mother Baby Care Unit to comfortably accommodate family visits in a more homelike setting. ■



Success of FEMAP Leads to Ambitious Plans

Close to 75 per cent of all mental illness begins before the age of 25. Research shows that untreated mental health issues in youth can lead to dropping out of school, harm to family and social relationships, chronic long-term mental health issues, and greater reliance on social assistance, increased substance use and, in some cases, suicide.



FEMAP founder Dr. Elizabeth Osuch

The First Episode Mood and Anxiety Program (FEMAP) is an innovative and donor-funded program that aims to intervene early by supporting youth between the ages of 16 and 25 years who are experiencing mood

and anxiety problems. The goal of the program is not just to reduce symptoms but also to provide the support and treatment needed so that these young people can get back to their normal life path – returning to school, maintaining relationships with friends and family and working towards their goals.

Because this age group is sometimes the hardest to engage, FEMAP has done an extraordinary job at reducing the barriers to treatment. They have created a welcoming, youth-friendly environment. Youth can self-refer and make appointments through the internet or texting, and the clinic

itself is situated in a non-stigmatizing, converted Victorian home on major transit routes.

The program has blossomed over the years since it opened in 2006, with referrals growing by word-of-mouth and with good outcomes for program members. Building strong partnerships in the community and with the Hospital resulted in positive outcomes and greater potential to serve this population.

THE NEED: The program's success is a double-edged sword. More and more young people are making use of the resources, but staff and space limitations are hindering acceptance of these self-referrals and a waiting list is now forming where none existed in earlier years.

THE SOLUTION: The solution is a bigger space, more staff and a bold community vision – a place where immediate needs are met and a continuum of care is established with other community services to provide such things as stable housing, financial support, and the chance for patients to explore academic and employment opportunities.

FEMAP founder Dr. Elizabeth Osuch and the leadership team at LHSC are assessing larger locations, so that FEMAP can continue to meet the ever-increasing demand for its services. It is an exciting time for FEMAP – which is largely funded through philanthropic support and would simply not exist without the generosity of our community – so thank you to all the generous donors who have supported it! ■

Community Support of FEMAP



September saw the first Sutton Select Invitational Charity Golf Tournament. This closed tournament featured over 80 realtors coming together for a fun day of golf at Firerock Golf Club. Proceeds from the event supported FEMAP. ■

A Grateful Mother's Story

"Our son started Western University full of excitement, living in residence, a member of a varsity team and in the first year science program. Life was good for him. However, by the end of his first year, he had given up his sport, was not able to get himself up to go to classes and failed three of his five courses.

We are so thankful that he received the help he needed early in his illness, and that Dr. Osuch gave him the hope he needed to believe he could get better.

He moved home for the summer, and was irritable, angry and could not wake up in the mornings for work. He sought medical assistance from our family doctor, but he was not able to communicate with us and had no faith in our family doctor's ability to help him. Things were getting worse as he outwardly showed anger and a total lack of interest in life. He continued to spiral down.

I heard about FEMAP and called to see if they could take him. Dr. Osuch saw our son regularly for two years. Even when he did not leave his room for days on end, he would get up and go to his appointments.

Dr. Osuch earned his trust, and he believed that she would be able to find something to help him get better. He says now that she gave him the only hope he had.

Our son has now returned to Western University to finish his studies. He has regained a full and healthy life. The turnaround for him happened very slowly, but he is well now and has a great deal of insight into his illness." ■

— A grateful mother



World-leading Robotic Surgery Program gets \$1 Million Boost



Dr. Bob Kiaii shows Jamie Crich the da Vinci Si Surgical System

London's Crich family, owners of the Auburn Group of Companies, is backing a world-leading surgical program at LHSC with a \$1 million gift. The funds, donated through LHSF, will help finance the latest da Vinci Si Surgical System currently in use at the hospital's CSTAR program (Canadian Surgical Technologies & Advanced Robotics).

"Because our family has been touched by the wonderful caregivers at London Health Sciences Centre, most particularly Dr. Bob Kiaii and Dr. Neil McKenzie, we are making a commitment today to ensure that patients will continue to experience the exemplary care made possible when skilled and caring surgeons have access to the latest and most innovative technology," says family spokesperson Jamie Crich. ■

LHSC's Adult Eating Disorders Service has a New Home



The new home of the Adult Eating Disorders Service

In April 2016, staff and patients of LHSC's Adult Eating Disorders Service moved into their new home at 54 Riverview Avenue.

LHSC is the first hospital in Ontario working in partnership with the Canadian Mental Health Association Middlesex to offer a community-based residential eating disorders program.

"Moving into this new space in the community allows us to significantly increase the number of patients we are able to see and expand the care we are able to provide," says Dr. Philip Masson, program psychologist. ■

Community Support of the Eating Disorders Service

London Health Sciences Foundation would like to extend its sincere thank you to donors for their generous support and compassionate care. Donors have changed the lives of patients and families with their support. Eating disorders are the single most deadly mental illness and donors understand this and have played a critical role in helping patients access programs in a facility tailor-made for their care.

"Our clients with eating disorders often have significant shame and guilt about their disorder. Contributions from donors have a tremendous impact by not only helping us offer treatment in a wonderfully equipped facility but also by signifying to our clients that our whole community validates their struggle and is supporting them in their treatment," says Dr. Philip Masson, Psychologist, Adult Eating Disorders Service, LHSC.

Donor support enhances and strengthens the continuity of care for patients with mental health disorders in London and Southwestern Ontario. Donors are making it possible for our Hospital to introduce new programs and augment existing ones designed to intervene at the earliest signs of mental health difficulties. ■

A New and Innovative Way to Help Women

London Health Sciences Centre is working to enhance urogynecology care for patients across Southwestern Ontario – reducing the stigma surrounding urogynecologic issues and offering women improved access to education and treatment.

Thanks to a generous commitment to the Women's Care Campaign from Shoppers Drug Mart, LHSC's urogynecology team embarked on a new and exciting initiative that will allow for:

- Significantly shorter wait times for women to receive an initial urogynecology assessment.
- Quicker access for women who require more complex treatment interventions.
- Increased public awareness and decreased stigma associated with female urinary incontinence.

Specifically, LHSC will make this new model of care a reality by:

- Incorporating best-practice guidelines into the way patient care is delivered.
- Engaging with key community partners.
- Creating an early assessment clinic at Victoria Hospital.
- Developing patient education materials and education-outreach initiatives.



Project facilitator
Tracey Brown MScN, RN

London Health Sciences Centre's Urogynecology Clinic is set to open on November 30, 2016. ■

A Gift from – and to – the Heart



Gary and Mary Margaret Koreen

To celebrate their 50th wedding anniversary on September 18th, 2015, Gary and Mary Margaret Koreen decided to donate \$50,000 in support of the Cardiac Care Program at LHSC.

Gary, who underwent surgery under the care of the Cardiac Care team in 1997 and 2010, currently volunteers on LHSF's Cardiac Care Campaign Cabinet.

Thanks to his time on the Cardiac Care Campaign Cabinet, Gary decided to have their generous gift support one of the major fundraising priorities of the Cardiac Care Campaign: the Cardiac Catheterization Labs. Known as the Cath Labs, these specialized treatment rooms will use state-of-the-art diagnostic imaging equipment to visualize the arteries and chambers of the heart and help treat any issues or abnormalities found. ■

Mental Health Walk or Run Celebrates Third Year



Completing its third successful year, the Mental Health Walk or Run provides a venue to celebrate, promote awareness and de-stigmatize mental health in our community. Donations and event funds assist with education, emergency services and patient care needs for the Mental Health Program at LHSC. ■

Run for Women Supports Healthy Moms



A 175-strong Team Shoppers Drug Mart came out for the SHOPPERS LOVE. YOU. Run for Women in Harris Park on June 12, 2016. Supporting Perinatal Mental Health Care at LHSC, the event was a huge success, raising \$42,143. ■

A Transformational Gift to Tackle Cancer's Biggest Puzzle



Keith Samitt knows the experience of cancer firsthand. Not only is the disease itself frightening, but so is the possibility of metastasis – when cancer spreads to nearby or distant locations in the body, months or even years after the original diagnosis.

Although the vast majority of cancer deaths (estimated at 90 per cent) are due to cancer spread, the medical community knows remarkably little about preventing metastasis or delaying metastatic recurrence.

Physicians and scientists at LHSC's London Regional Cancer Program (LRCP) have a plan to change this through

world-leading research. Mr. Samitt's commitment of a \$1 million bequest in his will, combined with a current gift to the program, is the game-changing support that will transform this research from a vision to reality by enabling this critically important research to unfold.

Co-led by senior oncology scientist Dr. Alison Allan and radiation oncologist and clinician scientist Dr. David Palma, the Metastasis Translational Cancer Research Team is blazing a trail as the first metastasis research group in Canada.

"Solving the puzzle of metastasis – why it happens, how to find it earlier and how to develop effective treatments to get rid of it – remains the greatest unmet need in oncology," says Dr. Allan. "We're so grateful to Mr. Samitt for his vision and generosity in supporting the research team and our work, which is directed toward solving this important problem for patients with many different types of cancer." ■

Community Support of Pulmonary Hypertension Clinic

Walter Lockhart (left) presented LHSC's Dr. Sanjay Mehta with a cheque for \$10,025 to support the Pulmonary Hypertension Clinic in honor of his late wife, Shirley Lockhart. ■



We'd Be Happy to Hear from You!



Please contact us if you have any questions about London Health Sciences Foundation's fundraising campaign for London Health Sciences Centre or how philanthropic support is helping to create world-class care right here in London.

Gabriella Catolino
Campaign Director
London Health Sciences Foundation
Tel 519.685.8717
Gabriella.Catolino@lhsc.on.ca



London Health Sciences Foundation

747 Base Line Road East
London, ON N6C 2R6
Tel 519.685.8409
foundation@lhsc.on.ca
www.lhsf.ca

London Health Sciences Foundation is a charity accredited by both the Better Business Bureau and Imagine Canada.



Charitable Registration Number 894781475RR0001